



ATS ELGI
THINK LONG RUN

Tyre Inflators

The trustworthy companion



▶ Tyre inflator electronic pre-set t



Model TICP 140 SNX

Operating pressure	0 - 140 Psi
Display	2x4 digit, 1" seven segment LCD with backlit display
Key board	4 keys - tactile
Measuring resolution	0.1 Psi
Display Resolution	1.0 Psi
Operating voltage	230 + 10% single v.a.c / Ph
Power	25W
Electrical protection	MCB
Valves - solenoid	230 v.a.c / 8W
Dimension: Control panel (l x w x h)	295 x 145 x 1455 mm
Stand (h x w x d)	1475 x 275 x 325 mm
Environmental protection	IP 55

Features

- Inflates/ deflates tyre as per the preset pressure
- High performance solenoid valves
- Accurate tyre pressure
- Digital backlit display of set pressure and tyre pressure
- Low pressure indicators
- Inflation level indicator
- Air filter
- Regulator with pressure setting
- Recommended pressure display board for popular vehicles

Benefits

- The need to measure the pressure is totally eliminated
- Ensures no wastage of air
- Ensures proper grip and extends the life of your tyre
- Assures clear visibility, both in daylight and at night
- Facilitates to check the air pressure in the compressor
- Flat tyres below 7Psi can be identified
- Provides clean air
- Prevents over pressure
- Provides the prescribed pressure for all vehicles

▶ Tyre inflator electronic pre-set t

Eliminating the need for a separate compressor with long pipe lines, ATS ELGI, for the first time in India has indigenously manufactured the new electronic tyre inflator with a built-in compressor. This product is best suited for residential complexes, parking lots, shopping malls and of course for petrol filling stations, garages and tyre shops.

This new tyre inflator is designed to perform in rugged conditions with low maintenance and trouble free operation.



Features	Benefits
<ul style="list-style-type: none"> • Tyre inflator with a built-in compressor • In-built air compressor • Can handle tyres of cars, LCV's and HCV's • Inflates and deflates tyres as per the set pressure • LCD, seven segment display 	<ul style="list-style-type: none"> → No need for pipe lines, since compressor is integrated → Provides instant & automatic start of compressor for tyre inflation → A wide variety of tyres can be inflated → Elimination of over pressure and bursting of tube → Assures clear visibility, both in day-light and at night

Model TICP 140 BIC	
Cabinet	MS
Operating pressure	0 - 120 psi
Pressure setting range	7 - 100 Psi
Display	
- Type	2x3 ^{1/2} digit, seven segment, LCD
- No. of displays	2 (Backlit)
Operating voltage	230 ± 10% Volts
Overall dimensions (l x w x h)	650 x 425 x 1650 mm
Length of outlet air hose	10 m
Length of power chord	1.5 m

▶ Tyre inflator electronic pre-set t

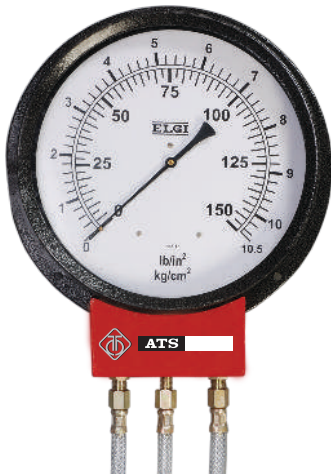
Is used to inflate and deflate the tyre pressure in the range of 0 - 150 Psi. It can be used in all the vehicle workshops, service centers and is suitable for all size of pneumatic tyres.

Salient Features
<ul style="list-style-type: none"> • Suitable for all type of tyres, including truck tyres • Working pressure up to 140 Psi • Calibration facility • Low power consumption • Portable • 10 meters hose with hand control valve and double end connector • Single button for swapping the display between units like “Psi, kg/cm² and KPa”



▶ Wall mounted tyre inflator

Used to inflate and deflate pneumatic tyres of all sizes. Ideal for petrol filling stations, garages and small workshops



Model T1 10022

Pressure range	0 - 10.5 kgf/cm ²
Length of hose	7500 mm (2 Nos.) 1500 mm (2 Nos.) 300 mm (2 Nos.)
Type of connector	Double end
Overall dimensions (l x w x h)	280 x 340 x 600 mm
Weight	7.4 kgs

The Long Run benefits only with ATS ELGI

Over 50 years of experience and continuous innovations, make the ATS ELGI's tyre changer such a brilliant solution for you. They are exceptionally dependable and engineered for global practices like Six Sigma, TPM, TQM and Quality Circles. Added to innumerable product advantages is the invaluable edge of service. A vast dealer network spanning India and the world ensures easy availability and prompt service. The fact is those who think long run, insist on ATS ELGI - the global service station solution company.

Due to continuous engineering improvements, specifications are subject to change. Pictures shown in this folder are representative and not the entire range.



ATS ELGI Ltd.,

Private Industrial Estate, Kurichy, Coimbatore - 641021, India.

Tel : +91-422-2589999 | Email: enquiry@ats-elgi.com

Visit us at : www.ats-elgi.com

Toll-free number : 1800-425-3544

Working Hrs : Monday - Saturday : 9:00AM - 7:00PM

